

## MLS Area SWE

Listings	This Month			Year-to-Date		
	Dec 2021	Dec 2020	Change	2021	2020	Change
Single Family Sales	70	60	+16.7%	865	967	-10.5%
Condo/TH Sales	5	7	-28.6%	52	58	-10.3%
<b>Total Sales</b>	<b>75</b>	<b>67</b>	<b>+11.9%</b>	<b>917</b>	<b>1,025</b>	<b>-10.5%</b>
New Homes Only	--	1	--	21	26	-19.2%
Resale Only	75	66	+13.6%	896	999	-10.3%
Sales Volume	\$42,742,300	\$28,711,544	+48.9%	\$517,100,300	\$415,270,229	+24.5%
New Listings	42	39	+7.7%	1,048	940	+11.5%
Pending	--	--	--	--	--	--
Withdrawn	3	2	+50.0%	12	18	-33.3%
Expired	3	2	+50.0%	12	18	-33.3%
Months of Inventory	0.4	0.2	+302.7%	N/A	N/A	--

Average	This Month			Year-to-Date		
	Dec 2021	Dec 2020	Change	2021	2020	Change
List Price	\$564,724	\$415,085	+36.1%	\$531,784	\$401,818	+32.3%
List Price/SqFt	\$272	\$206	+31.9%	\$252	\$185	+36.5%
Sold Price	\$569,897	\$428,531	+33.0%	\$563,904	\$405,142	+39.2%
Sold Price/SqFt	\$275	\$212	+29.7%	\$268	\$186	+43.6%
Sold Price / Orig LP	101.0%	102.9%	-1.8%	106.5%	100.8%	+5.7%
Days on Market	22	15	+47.9%	12	29	-58.1%

Median	This Month			Year-to-Date		
	Dec 2021	Dec 2020	Change	2021	2020	Change
List Price	\$525,130	\$370,000	+41.9%	\$480,000	\$369,500	+29.9%
List Price/SqFt	\$264	\$202	+30.9%	\$246	\$181	+35.7%
Sold Price	\$519,999	\$375,019	+38.7%	\$501,000	\$371,500	+34.9%
Sold Price/SqFt	\$263	\$209	+26.0%	\$263	\$182	+44.5%
Sold Price / Orig LP	100.0%	102.0%	-2.0%	103.4%	100.0%	+3.4%
Days on Market	14	5	+180.0%	5	7	-28.6%

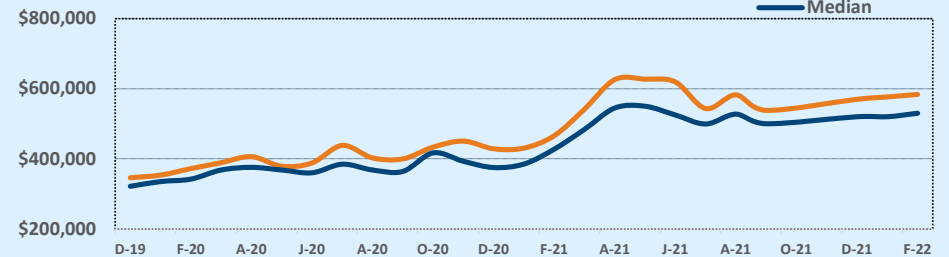
## Residential Statistics

## Independence Title

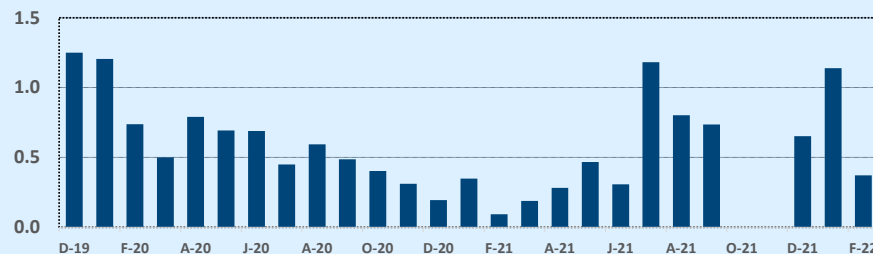
## December 2021

Price Range	This Month			Year-to-Date		
	New	Sales	DOM	New	Sales	DOM
\$149,999 or under	--	--	--	--	--	--
\$150,000- \$199,999	--	--	--	1	1	16
\$200,000- \$249,999	--	--	--	1	1	15
\$250,000- \$299,999	--	--	--	14	6	3
\$300,000- \$349,999	1	1	12	54	28	10
\$350,000- \$399,999	3	4	8	118	89	12
\$400,000- \$449,999	6	12	13	148	133	12
\$450,000- \$499,999	10	15	24	218	184	13
\$500,000- \$549,999	8	12	37	132	112	14
\$550,000- \$599,999	3	9	25	96	91	12
\$600,000- \$699,999	6	11	24	112	111	13
\$700,000- \$799,999	2	4	10	72	65	12
\$800,000- \$899,999	1	3	16	32	48	9
\$900,000- \$999,999	--	1	11	23	22	7
\$1M - \$1.99M	1	3	22	22	23	10
\$2M - \$2.99M	--	--	--	3	2	7
\$3M+	1	--	--	2	1	110
<b>Totals</b>	<b>42</b>	<b>75</b>	<b>22</b>	<b>1,048</b>	<b>917</b>	<b>12</b>

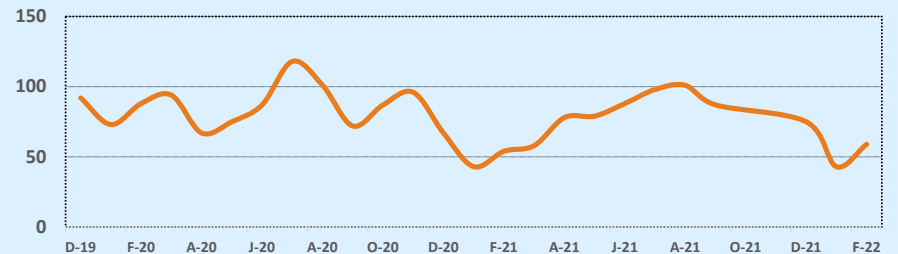
### Average & Median Sales Price - Last Two Years



### Months of Inventory - Last Two Years



### Number of Sales - Last Two Years



Based on information from the Austin Board of REALTORS® (alternatively, from ACTRIS). Neither the Board nor ACTRIS guarantees or is in any way responsible for its accuracy. The Austin Board of REALTORS®, ACTRIS and their affiliates provide the MLS and all content therein "AS IS" and without any warranty, express or implied. Data maintained by the Board or ACTRIS may not reflect all real estate activity in the market.